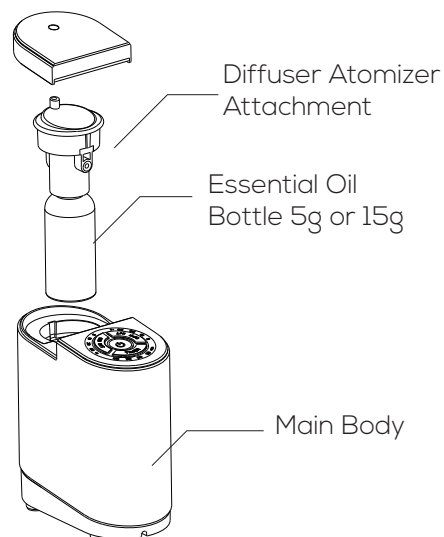




FLORIHANA

Microparticles Diffuser User Manual

FLORIHANA DISTILLERIE
Les grands prés, 06460 Caussols, France
+33 (0) 4 93 09 06 09
www.florihana.com

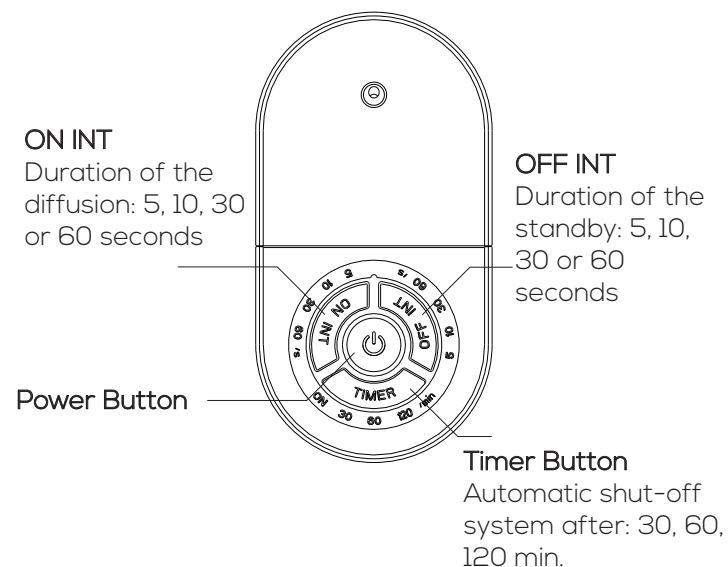


01

CLEANING

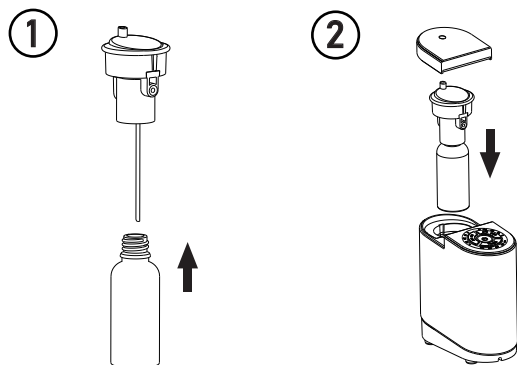
The only part that needs to be cleaned is the Diffuser Atomizer Attachment. In order to do so please use alcohol to clean the part that goes inside of the essential oil bottle.

02



OPERATION

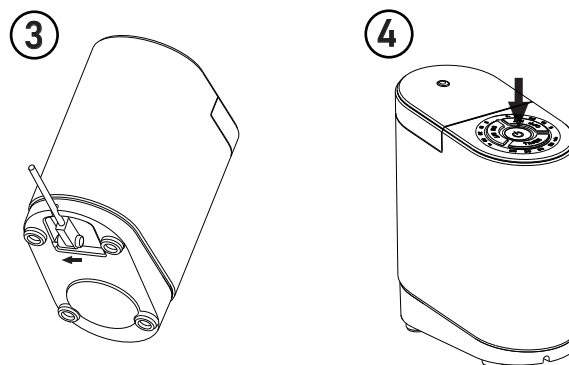
03



- ① Screw the essential oil bottle to the diffuser atomizer attachment.
- ② Mount the assembled unit (bottle + atomizer) to the main body (see illustration).

OPERATION

04



- ③ After assembling, plug the cable to the main body and then to the power outlet or a USB port.
- ④ Press "POWER" to start the diffusion. To customize your settings you can choose both the Duration of the diffusion and the standby.

CUSTOM DIFFUSION MODE

05

This diffuser has 3 diffusion modes (High, regular and low).

Press the power button once to start the device. The first automatic mode is the "high diffusion mode".

Press the power button once more to enter the "regular diffusion mode".

Press the power button once more to enter the "low diffusion mode".

Press the power button once more to turn off the device.

SPECIFICATIONS

Size _____ 120mm(L)* 63mm(W)* 137mm(H)
Weight _____ 530g
Input _____ AC 100-240V 50/60Hz
Output _____ DC 5V 1A
Length of the cable _____ 100cm
Surface area _____ 100m²
Materials _____ Aluminium alloy, PP
Accessories _____ USB cable, adapter, user manual, 10ml bottle